

U. Janssens

Fortbildung Innere Medizin

The NEW ENGLAND JOURNAL of MEDICINE

CLINICAL PRACTICE

Caren G. Solomon, M.D., M.P.H., *Editor*

Pulmonary Embolism

Susan R. Kahn, M.D., and Kerstin de Wit, M.B., Ch.B., M.D.

Case vignette

- A 41-year-old man presents to the emergency department with a 3-week history of breathlessness
- He recently completed a course of antibiotic medication for presumed pneumonia
- On the day of presentation, he awoke with dull pain on the right side of the back

Case vignette

- His medical history is otherwise unremarkable
- His heart rate is 88 beats per minute, blood pressure 149/86 mm Hg, respiratory rate 18 breaths per minute, temperature 37°C, and oxygen saturation 95% while he is breathing ambient air
- Auscultation of his chest reveals normal breath sounds and normal heart sounds

Case vignette

- An examination of the legs is normal
- His creatinine and troponin levels are within normal limits, and a radiograph of the chest is normal
- The physician's implicit assessment is that the likelihood of pulmonary embolism is greater than 15%

Case vignette

- The patient's Wells score is 0 (on a scale of 0 to 12.5, with higher scores indicating a higher probability of pulmonary embolism), and the d-dimer level is 2560 ng per milliliter
- How would you evaluate this patient for pulmonary embolism, and how would you manage this case?

The Clinical Problem

- Pulmonary embolism occurs when embolic venous thrombi are caught within the branching lung vasculature
- These thrombi often develop within the leg or pelvic veins, and approximately half of all deep-vein thrombi embolize to the lungs
- The annual incidence of pulmonary embolism worldwide is approximately 1 in 1000 persons

The Clinical Problem

- Although almost 20% of patients who are treated for pulmonary embolism dies within 90 days, pulmonary embolism is not commonly the cause of death because it frequently coexists with other serious conditions, such as cancer, sepsis, or illness leading to hospitalization, or with other events, such as surgeries
- The true mortality associated with undiagnosed pulmonary embolism is estimated to be less than 5%, but recovery from pulmonary embolism is associated with complications such as bleeding due to anticoagulant treatment, recurrent venous thromboembolism, chronic thromboembolic pulmonary hypertension, and long-term psychological distress.

The Clinical Problem

- Approximately half the patients who receive a diagnosis of pulmonary embolism have functional and exercise limitations 1 year later (known as post-pulmonary-embolism syndrome), and the health-related quality of life for patients with a history of pulmonary embolism is diminished as compared with that of matched controls.
- Therefore, the timely diagnosis and expert management of pulmonary embolism are important

Key Clinical Points

- Pulmonary embolism is a common diagnosis and can be associated with recurrent venous thromboembolism, bleeding due to anticoagulant therapy, chronic thromboembolic pulmonary hypertension, and long-term psychological distress.
- A minority of patients who are evaluated for possible pulmonary embolism benefit from chest imaging (e.g., computed tomography).

Key Clinical Points

- Initial treatment is guided by classification of the pulmonary embolism as high-risk, intermediate-risk, or low-risk
- Most patients have low-risk pulmonary embolism, and their care can be managed at home with a direct oral anticoagulant.

Key Clinical Points

- Patients with acute pulmonary embolism should receive anticoagulant therapy for at least 3 months
- The decision to continue treatment indefinitely depends on whether the associated reduction in the risk of recurrent venous thromboembolism outweighs the increased risk of bleeding and should take into account patient preferences.

Key Clinical Points

- Patients should be followed longitudinally after an acute pulmonary embolism to assess for dyspnea or functional limitation, which may indicate the development of post–pulmonary-embolism syndrome or chronic thromboembolic pulmonary hypertension.

STRATEGIES AND EVIDENCE

Diagnostic Testing for Pulmonary Embolism

- Perhaps the most challenging aspect of testing for pulmonary embolism is knowing when to test
- Common symptoms of pulmonary embolism are fatigue, breathlessness, chest pain, dizziness, cough, diaphoresis, fever, and hemoptysis
- A meta-analysis of cohort studies showed that a history of dyspnea, immobilization, recent surgery, active cancer, hemoptysis, previous venous thromboembolism, or syncope was associated with an increased likelihood of pulmonary embolism

Diagnostic Testing for Pulmonary Embolism

- Testing for pulmonary embolism should also be considered if a patient appears not to have had a response to treatment for another diagnosed respiratory condition, because initial misdiagnosis is common.

Diagnostic Testing for Pulmonary Embolism

- In North America, pulmonary embolism is diagnosed in only 1 patient for every 20 who are tested for the presence of pulmonary embolism when they present to the emergency department
- This prevalence has remained stable for two decades and is four times lower than the prevalence reported among patients in Europe
- Established guidelines do not stipulate which patients should undergo testing for the presence of pulmonary embolism

Diagnostic Testing for Pulmonary Embolism

- Qualitative research suggests that physician norms and local culture are major drivers in the decision to test for pulmonary embolism
- Noninvasive tests to rule out the diagnosis that are based on the assessed clinical probability of pulmonary embolism are extremely effective in safely reducing the use of computed tomography (CT), resulting in only 30 to 40% of patients with suspected pulmonary embolism subsequently undergoing diagnostic imaging

Diagnostic Testing for Pulmonary Embolism

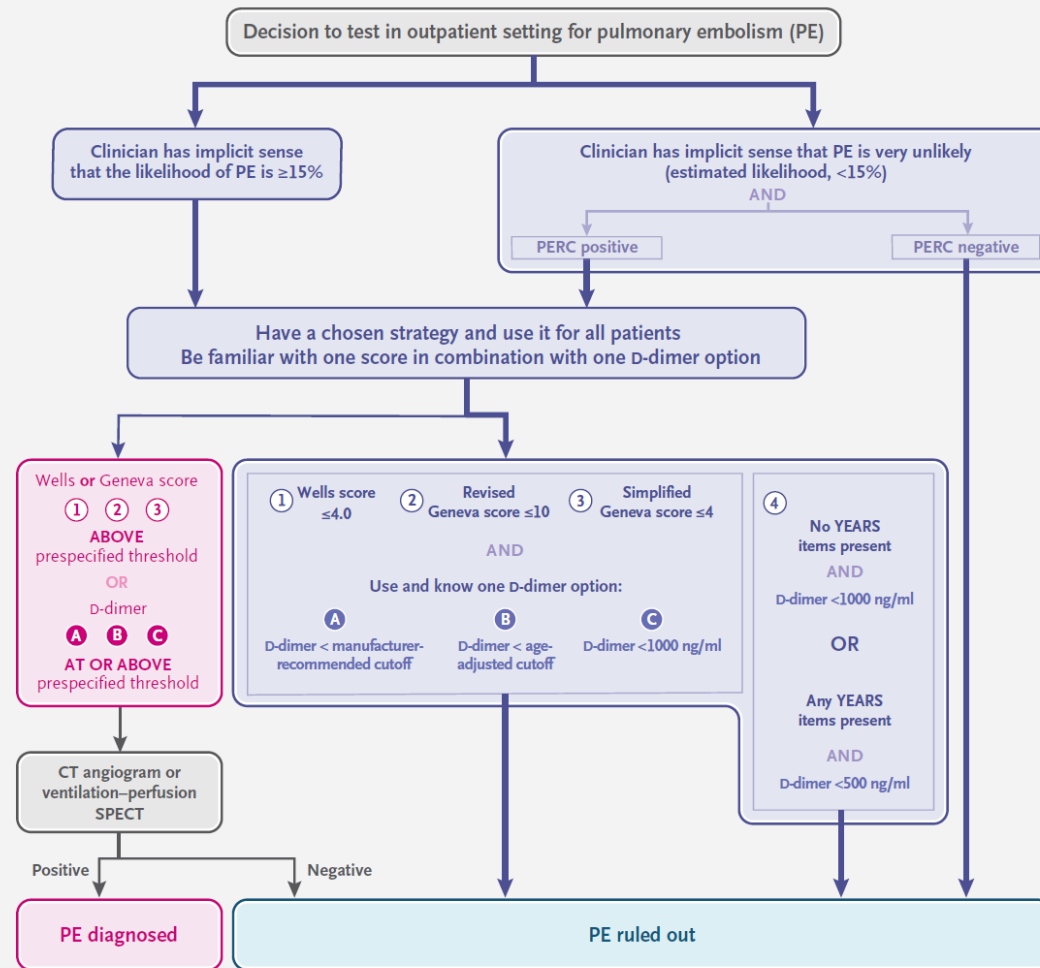
- In cases in which physicians have an implicit sense that their patient is very unlikely to have pulmonary embolism (estimated likelihood, <15%), large cohort studies have shown that the Pulmonary Embolism Rule-out Criteria (PERC) rule can safely rule out pulmonary embolism without further diagnostic imaging
- In practice, however, implicit estimation typically overestimates the probability of pulmonary embolism, which can limit the use of the PERC rule
- Physicians should be familiar with a validated decision rule to guide the use of d-dimer testing

Diagnostic Testing for Pulmonary Embolism

- Among patients with a low structured clinical probability score — a Wells score of 4.0 or less (found in 80% of patients tested in North America), a revised Geneva score of 10 or less (on a scale ranging from 0 to 22, with higher scores indicating a greater probability of pulmonary embolism), and a simplified Geneva score of 4 or less (on a scale ranging from 0 to 9, with higher scores indicating greater probability of pulmonary embolism) — pulmonary embolism can be safely ruled out on the basis of d-dimer levels when manufacturer-recommended cutoffs were used (sensitivity, 98 to 99%; specificity, 37 to 40%)

Diagnostic Testing for Pulmonary Embolism

- Additional details of the scoring systems and their use are provided in Figure 1
- Older data from a different d-dimer assay suggested that a d-dimer level of less than 500 ng per milliliter could be used to rule out pulmonary embolism without consideration of clinical risk factors, but more data are needed to confirm the usefulness of this approach with current assays and relative to currently recommended strategies
- The diagnostic accuracy of d-dimer testing in patients with coronavirus disease 2019 (Covid-19) remains unchanged



Key				
Wells score		Points	Geneva score	
PE is the most likely diagnosis		3.0	Age >65 yr	
Signs and symptoms of DVT		3.0	Previous DVT or PE	
Heart rate >100 beats/min		1.5	Surgery or fracture within mo	
In previous 4 wk, immobilization for >3 days or surgery		1.5	Active cancer	
Previous DVT or PE		1.5	Pain in one lower limb	
Hemoptysis		1.0	Hemoptysis	
Active cancer		1.0	Heart rate 75–94 beats/min	
			Heart rate ≥ 95 beats/min	
			Pain on lower-limb deep-vein palpitation and edema in one leg	
YEARS items			Revised points	Simplified points
• PE is the most likely diagnosis			1	1
• Hemoptysis			3	1
• Clinical signs of DVT			2	1
			2	1
			3	1
			2	1
			3	1
			5	2
			4	1
PERC				
(If any items are present, PERC test is positive)				
• Age ≥ 50 yr				
• Heart rate ≥ 100 beats/min				
• Oxygen saturation $<95\%$ while patient is breathing room air				
• Swelling in one leg				
• Hemoptysis				
• Surgery or trauma within past 4 wk				
• Previous DVT or PE				
• Hormone use				

Diagnostic Testing for Pulmonary Embolism

- Newer approaches have adjusted the d-dimer threshold for ruling out pulmonary embolism and are validated for d-dimer assays for which the manufacturer-recommended cutoff is equivalent to 500 ng per milliliter
- These strategies include d-dimer levels that are adjusted for age (reported sensitivity for the age-adjusted approach ranges from 97 to 99%, and specificity ranges from 42 to 47%) or that are adjusted to the YEARS algorithm for ruling out pulmonary embolism (sensitivity, 96 to 98%; specificity, 54 to 61%) or the Wells score (sensitivity, 93 to 97%; specificity, 61 to 67%)
- Randomized trials that compare various d-dimer strategies in patients with pulmonary embolism are lacking.

Diagnostic Testing for Pulmonary Embolism

- Diagnostic imaging is reserved for patients in whom pulmonary embolism cannot be ruled out on the basis of a decision rule, given the potential harms of radiation exposure
- CT pulmonary angiography is usually the most timely and accessible imaging technique; however, to minimize lung and breast-tissue irradiation in younger patients, ventilation–perfusion single-photon-emission CT (SPECT) is a low-radiation option
- The incidence of false positive results from CT screening vary among providers and may be as high as 5%

Diagnostic Testing for Pulmonary Embolism

- Within 3 months after having normal results on CT that had been performed because of suspicion of pulmonary embolism, 1.2% of patients receive a diagnosis of venous thrombosis
- In contrast, the diagnostic performance of ventilation–perfusion SPECT has not been well established.^{[24](#)}

Diagnostic Testing for Pulmonary Embolism

- Many patients who have been hospitalized for an unrelated condition are also tested for pulmonary embolism;
- there is less evidence to guide d-dimer use in these patients
- Although d-dimer levels may still be highly sensitive for testing patients who are hospitalized, they are less useful in ruling out pulmonary embolism because levels are often elevated during illness and after surgery.

TREATMENT

Initial Management

- Initial treatment of pulmonary embolism is guided by risk stratification of the pulmonary embolism as high, intermediate, or low risk on the basis of the patient's clinical presentation (Figure 2)
- The nomenclature of “massive” and “submassive” in describing pulmonary embolism is confusing, given that clot size does not dictate therapy.

High Risk

- Approximately 5% of patients present with high-risk pulmonary embolism, involving shock, end-organ hypoperfusion, hypotension (systolic blood pressure of <90 mm Hg or a decrease in systolic blood pressure of >40 mm Hg that is not caused by sepsis, arrhythmia, or hypovolemia), or cardiac arrest
- Observational data support the evaluation of patients with high-risk pulmonary embolism for immediate reperfusion therapy by ruling out contraindications (e.g., brain metastases, bleeding disorders, and recent surgery)

High Risk

- Intravenous systemic thrombolysis is the most readily available option for reperfusion, and protocols include a weight-based dose of Tenecteplase, alteplase at a dose of 0.6 mg per kilogram of body weight, or alteplase at a dose of 100 mg administered over a period of 1 to 2 hours
- There is insufficient evidence to support one of these agents over the other; however, tenecteplase can be administered as a bolus in an emergency, and weight-based dosing may be preferable in elderly patients or patients with low body weight.

High Risk

- Alternative reperfusion approaches include surgical thrombectomy and catheter-directed thrombolysis (with or without thrombectomy)
- Additional supportive measures include the administration of inotropes and the use of extracorporeal life support.

Intermediate Risk

- ➡ Patients with echocardiographic or CT evidence of right heart strain, elevated cardiac biomarkers (such as troponin or brain natriuretic peptide), or both are considered to have intermediate-risk pulmonary embolism
- ➡ Systemic thrombolysis is not typically recommended for these patients
- ➡ in a randomized, controlled trial that assessed the addition of tenecteplase to heparin, treatment with tenecteplase resulted in an absolute reduction in the risk of hemodynamic decompensation of 3 percentage points, at the expense of a 9-percentage-point increase in the risk of major bleeding (and a 2-percentage-point increase in the risk of hemorrhagic stroke)

Intermediate Risk

- Rather, patients with intermediate-risk pulmonary embolism should receive anticoagulant therapy and be closely monitored to identify the 1 patient in 20 in whom shock may subsequently develop (at which point reperfusion therapy may be administered)
- There are no guidelines for door-to-needle time for the treatment of pulmonary embolism like those that exist for the treatment of myocardial infarction and stroke.

Intermediate Risk

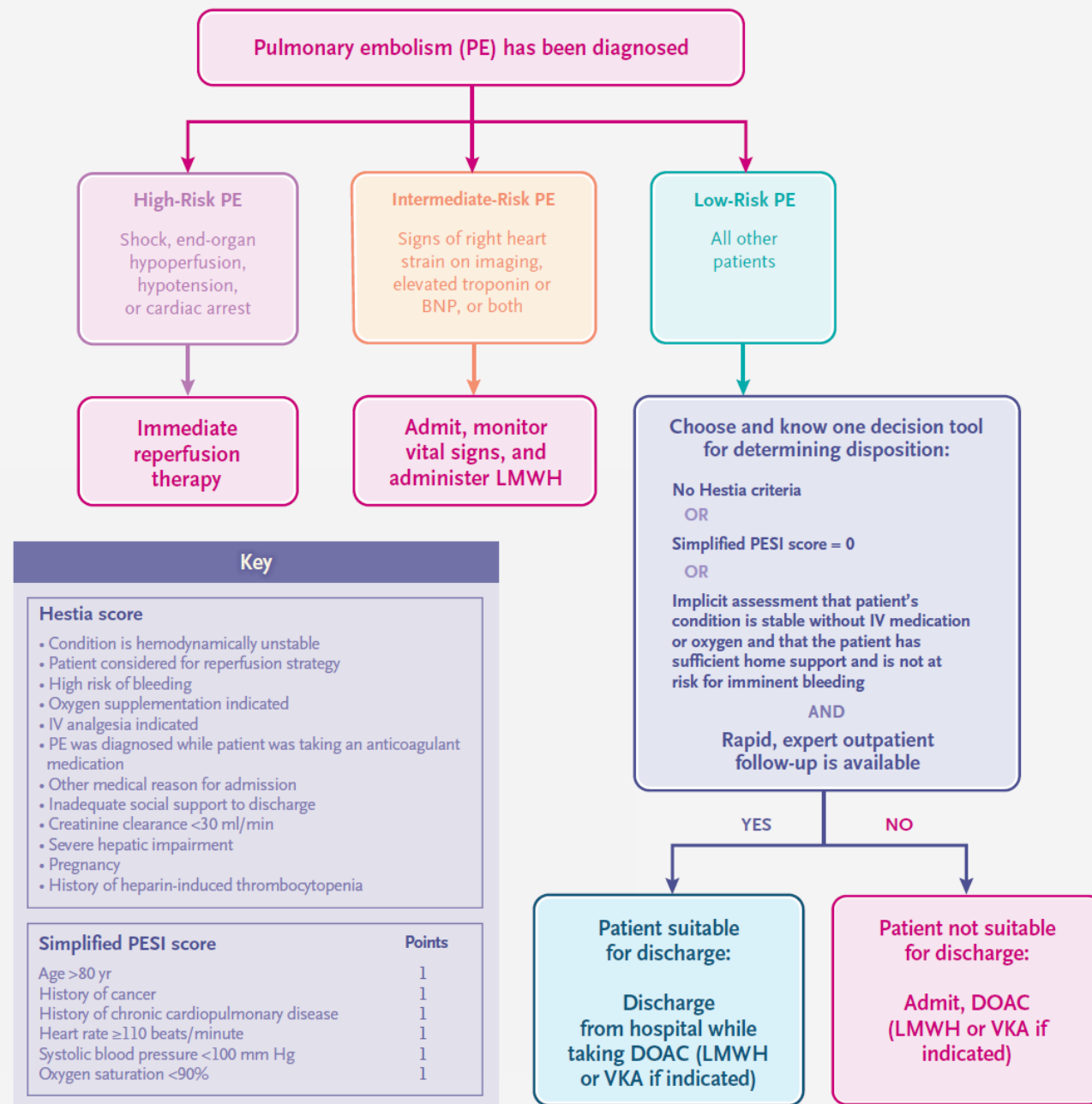
- On the basis of expert opinion, low-molecular-weight heparin is the preferred immediate anticoagulant for patients with intermediate-risk pulmonary embolism
- The therapeutic effects of immediate treatment with direct oral anticoagulants rivaroxaban and apixaban as compared with low-molecular-weight heparin have not been studied in patients at intermediate risk for pulmonary embolism, and unfractionated heparin causes excess bleeding
- When available, catheter-directed thrombolysis remains an option for patients at intermediate risk who have proximal, central pulmonary embolism; however, there is insufficient evidence to support catheter-directed thrombolysis over low-molecular-weight heparin in these patients.

Low Risk

- Patients with pulmonary embolism whose conditions are hemodynamically stable and who have no right ventricular strain and normal cardiac biomarkers are considered to have low-risk pulmonary embolism
- Most of these patients can be treated with a direct oral anticoagulant (on the basis of high-quality trial data) and assessed for outpatient treatment
- The decision for a patient to be treated at home can be guided by the score on the simplified Pulmonary Embolism Severity Index (PESI) or the Hestia score (Figure 2)

Low Risk

- In contrast to the Hestia score (a checklist of criteria that preclude treatment at home), the score on the simplified PESI predicts the risk of death rather than nonfatal complications and does not account for important variables such as the availability of support for the patient at home
- Results of a randomized, controlled trial showed a low risk of adverse events among patients with no Hestia criteria or with a score of 0 on the simplified PESI who received treatment as outpatients.



Subsequent Management

- Direct oral anticoagulants are the first-line treatment for most patients. Randomized trials have shown that direct oral anticoagulants, which do not necessitate monitoring, are as effective at reducing the risk of recurrent venous thromboembolism as vitamin K antagonists and result in a lower risk of major bleeding.
- Because comparisons of direct oral anticoagulants are lacking, the choice of agent is guided by pharmacologic properties and patient characteristics and preferences (e.g., concomitant interacting medications and patient preference for once-daily or twice-daily medication)

Subsequent Management

- In patients with cancer, trials support the safety and efficacy of the direct oral anticoagulants apixaban, edoxaban, and rivaroxaban as alternatives to treatment with low-molecular-weight heparin
- Vitamin K antagonists are preferred over direct oral anticoagulants in patients with advanced kidney or liver disease and in patients with antiphospholipid syndrome who are triple-positive (i.e., positive for lupus anticoagulant, anticardiolipin, and anti- β_2 -glycoprotein I antibodies), have very high antibody titers, or have a history of arterial thrombosis

Subsequent Management

- Low-molecular-weight heparin should be used to treat pregnant women with pulmonary embolism, since vitamin K antagonists and direct oral anticoagulants cross the placenta and are associated with adverse pregnancy outcomes

Duration of Therapy

- Patients with acute pulmonary embolism should receive anticoagulant therapy for at least 3 months to reduce the risks of further embolization, thrombus extension, early recurrence of venous thromboembolism, and death (Table 1)
- Whether treatment is stopped at 3 months or continued indefinitely depends on whether the reduced risk of recurrent venous thromboembolism with continued anticoagulation therapy outweighs the increased risk of bleeding, and the decision should take patient preferences into account

Duration of Therapy

- Among patients who have pulmonary embolism that was provoked by a major transient (i.e., reversible) risk factor (e.g., surgery with general anesthesia lasting >30 minutes, confinement to bed in the hospital for ≥ 3 days due to an acute illness, or major trauma or fracture), the long-term risk of venous thromboembolism recurrence is low and anticoagulation therapy can be stopped after 3 months
- If the pulmonary embolism was very large or was associated with moderate dysfunction of the right ventricle or if the patient has persistent residual symptoms, some experts recommend that treatment extend to 6 months

Duration of Therapy

- In patients with persistent provoking factors such as active cancer or antiphospholipid syndrome or who have had previous episodes of unprovoked venous thromboembolism, the long-term risk of recurrence is high and indefinite anticoagulation therapy is recommended

Duration of Therapy

- Decision making is more nuanced in patients with a first pulmonary embolism that was unprovoked or weakly provoked (i.e., associated with a minor transient risk factor, such as estrogen therapy, pregnancy, minor surgery, or minor leg injury)
- Among these patients, the risks of recurrent venous thromboembolism and fatal pulmonary embolism after stopping anticoagulation therapy are 10% and 0.4%, respectively, at 1 year, and 36% and 1.5% at 10 years; the risks are higher among men than among women

Duration of Therapy

- ➡ Trials have shown that extended anticoagulation therapy, as compared with shorter durations of anticoagulation, is highly effective for the prevention of recurrent venous thromboembolism
- ➡ However, in a meta-analysis (involving 14 randomized, controlled trials and 13 cohort studies), extended anticoagulation with direct oral anticoagulants was associated with a risk of 1.12 major bleeding events per 100 person-years (case fatality, 9.7%), and extended anticoagulation with vitamin K antagonists was associated with a risk of 1.74 major bleeding events per 100 person-years (case fatality, 8.3%)

Duration of Therapy

- The risk of bleeding was higher among older patients and among patients who had a creatinine clearance of less than 50 ml per minute, a history of bleeding, had received antiplatelet therapy, or had a hemoglobin level of less than 10 g per deciliter

Duration of Therapy

- Although indefinite treatment with anticoagulation is typically recommended after a first unprovoked or weakly provoked venous thromboembolism event, particularly in patients who are not at high risk for bleeding, time-limited treatment may be appropriate in some patients, including those among whom the estimated risk of recurrent venous thromboembolism is less than 5% within the first year after anticoagulation therapy is stopped
- Decision making with regard to the treatment of venous thromboembolism in women may be guided by the HERDOO2 rule, a prospectively validated prediction score that identifies some women with a first unprovoked or weakly provoked venous thromboembolism event who can safely discontinue anticoagulation therapy.

Duration of Therapy

- No validated score is currently available for use in men who have had a first unprovoked or weakly provoked pulmonary embolism, and many experts recommend continuing anticoagulation therapy indefinitely in these patients.

Subsequent Management

- In patients who continue to receive anticoagulants indefinitely, data from randomized trials indicate that low-dose direct oral anticoagulant regimens (i.e., rivaroxaban or apixaban) after the initial 6 months of full-dose anticoagulation have effectiveness and safety similar to those of full-dose regimens and greater effectiveness than aspirin
- However, low-dose regimens have not been assessed in pulmonary embolism in patients with cancer, in those with anatomically extensive pulmonary embolism, or in those at high risk for recurrent pulmonary embolism. Factors that may influence the choice of indefinite anticoagulant regimen are shown in Table S2.

Table 1. Anticoagulant Treatment Regimens for Pulmonary Embolism.*

Initial Phase of Anticoagulation	Short-Term Phase of Anticoagulation (3–6 mo)	Indefinite Phase of Anticoagulation (after 3–6 mo)
Apixaban, administered orally, 10 mg twice a day for 7 days	Apixaban, administered orally, 5 mg twice a day	Apixaban, administered orally, 5 mg twice a day or 2.5 mg twice a day†
Rivaroxaban, administered orally, 15 mg twice a day for 21 days	Rivaroxaban, administered orally, 20 mg once a day	Rivaroxaban, administered orally, 20 mg once a day or 10 mg once a day†
Low-molecular-weight heparin‡		
Administered subcutaneously for a minimum of 5 days§	Dabigatran, administered orally, 150 mg twice a day	Dabigatran, administered orally, 150 mg twice a day
Administered subcutaneously for a minimum of 5 days§	Edoxaban, administered orally, 60 mg once a day¶	Edoxaban, administered orally, 60 mg once a day¶
Administered subcutaneously for a minimum of 5 days,§ plus vitamin K antagonist, administered orally, with INR ≥ 2 for 2 days	Vitamin K antagonist, administered orally, with target INR of 2 to 3	Vitamin K antagonist, administered orally, with target INR of 2 to 3

* Direct oral anticoagulants and low-molecular-weight heparin are contraindicated in patients with severe renal impairment. Dosing of these medications in patients with renal impairment differs with the specific agent and among jurisdictions. With regard to use of direct oral anticoagulants in patients with obesity, post hoc analyses of phase 3 trials, observational data, and pharmacokinetic and pharmacodynamic data suggest that direct oral anticoagulants and vitamin K antagonists have similar effectiveness and safety in patients with body weight up to 120 kg or a body-mass index (BMI; the weight in kilograms divided by the square of the height in meters) of up to 40. For patients who weigh more than 120 kg or have a BMI higher than 40, standard doses of rivaroxaban or apixaban are among appropriate anticoagulant options; fewer supportive data exist for apixaban than for rivaroxaban. Other options include vitamin K antagonists, weight-based low-molecular-weight heparin (administered according to manufacturer recommendations), and fondaparinux.⁵² INR denotes international normalized ratio.

† A reduction in dose may be considered after 3 to 6 months of therapy.

‡ Low-molecular-weight heparin may be administered subcutaneously throughout initial, short-term, and indefinite phases of treatment, with dosage according to body weight.

§ Low-molecular-weight heparin should be administered for 5 to 10 days before the initiation of dabigatran or edoxaban and concurrent to initiating vitamin K antagonists.

¶ Edoxaban should be administered at a dose of 30 mg daily if the creatinine clearance is 15 to 50 ml per minute, if the patient's body weight is less than 60 kg, or if potent P-glycoprotein inhibitors are being used.

Other Testing

- Occult cancer is detected in 5.2% of patients within 1 year after a diagnosis of unprovoked pulmonary embolism
- An extensive screening strategy may detect more cancers than limited screening, but data are limited as to whether such screening is associated with better patient outcomes
- Experts recommend limited cancer screening guided by medical history, physical examination, basic laboratory tests and chest radiographs, and age-specific and sex-specific cancer screening

Other Testing

- Patients should be evaluated 3 to 6 months after acute pulmonary embolism is diagnosed to assess for dyspnea or functional limitation, which may indicate the development of post–pulmonary-embolism syndrome or chronic thromboembolic pulmonary hypertension
- If a decision to continue anticoagulation indefinitely was made at the time of diagnosis of pulmonary embolism, this decision should be reassessed annually or more often; anticoagulation may need to be discontinued if the risk of bleeding increases, a major bleeding event occurs, or the patient prefers to stop treatment.

Guidelines

- Current guidelines for pulmonary embolism management include those issued by the American College of Chest Physicians (ACCP), the American Society of Hematology (ASH), and the European Society of Cardiology (ESC)
- A summary of the key recommendations in these guidelines is provided in Table 2
- Our recommendations align with these guidelines, which are largely concordant but differ in the strength of their recommendations for some topics

Guidelines

- ACCP and ASH guidelines recommend anticoagulation be stopped at 3 months in the case of a first pulmonary embolism provoked by a weak transient risk factor, a recommendation that diverges from ESC guidelines, which suggest that indefinite anticoagulation be considered in such patients
- Our approach to this situation generally aligns with the ACCP and ASH guidelines while taking into account factors that influence the risk of recurrence (e.g., male sex or older age) and patient preference.

Table 2. Summary of Key Guideline Recommendations for the Treatment of Pulmonary Embolism.*

Scenario	American College of Chest Physicians†	American Society of Hematology‡	European Society of Cardiology§
Home vs. hospital treatment for low-risk PE	Recommend outpatient treatment if access to medications, care, and home circumstances adequate	Suggest home treatment	Consider early discharge and home treatment if proper outpatient care and anticoagulation can be provided
Subsegmental PE	In low-risk PE, suggest clinical surveillance and ultrasonography of both legs In high-risk PE (patient is hospitalized, immobile, has cancer, is pregnant, or has unprovoked PE), suggest anticoagulation	In patients with cancer, suggest short-term anticoagulation instead of observation	Not addressed
Choice of anticoagulant	Recommend direct oral anticoagulant instead of vitamin K antagonist In antiphospholipid syndrome, recommend vitamin K antagonist instead of direct oral anticoagulant	Suggest direct oral anticoagulant instead of vitamin K antagonist unless renal impairment, liver disease, or antiphospholipid syndrome is present	Recommend direct oral anticoagulant instead of vitamin K antagonist unless severe renal insufficiency, pregnancy or lactation, or antiphospholipid syndrome is present
Choice of anticoagulant for cancer-associated PE	Recommend direct oral anticoagulant instead of low-molecular-weight heparin for most patients	Suggest direct oral anticoagulant instead of low-molecular-weight heparin for first 3 to 6 mo of treatment	Consider weight-adjusted subcutaneous low-molecular-weight heparin for first 6 mo instead of vitamin K antagonists Consider edoxaban or rivaroxaban as alternative to low-molecular-weight heparin in patients without gastrointestinal cancer
Treatment of incidentally found asymptomatic PE	Suggest same initial and long-term anticoagulation as in patients with similar symptomatic PE	Short-term anticoagulation rather than observation suggested in patients with cancer	In patients with cancer, consider same management as in patients with symptomatic PE
Thrombolysis of PE	If no hypotension, recommend against systemic thrombolysis If patient has hypotension, suggest systemic thrombolysis if bleeding risk is not high If deterioration occurs after starting anticoagulation but there is no hypotension or increased bleeding risk, suggest systemic thrombolysis instead of no thrombolysis When thrombolysis is used, suggest systemic thrombolysis instead of catheter-directed thrombolysis If hypotension and high bleeding risk, failed thrombolysis, or imminent shock is present, suggest catheter-directed thrombus removal	If hemodynamic compromise is present, recommend thrombolysis followed by anticoagulation instead of anticoagulation alone If no hemodynamic compromise is present but evidence exists of right ventricular dysfunction (according to echocardiogram and biomarkers), suggest anticoagulation alone instead of routine use of thrombolysis plus anticoagulation If thrombolysis is used, suggest systemic thrombolysis instead of catheter-directed thrombolysis	In high-risk PE, recommend rapid initiation of unfractionated heparin administered intravenously and systemic thrombolysis In presence of contraindications to or failed systemic thrombolysis, recommend surgical pulmonary embolectomy and consider percutaneous catheter-directed treatment Recommend rescue thrombolysis if hemodynamic deterioration occurs with anticoagulation; as alternative, consider surgical embolectomy or percutaneous catheter-directed treatment In intermediate-risk or low-risk PE, routine use of primary systemic thrombolysis is not recommended.

Areas of Uncertainty

- ➡ Appropriate management of subsegmental pulmonary embolism (a single isolated subsegmental pulmonary embolus or multiple emboli, without the presence of pulmonary embolism in segmental or more proximal pulmonary vessels and without deep-vein thrombosis in the legs) is uncertain
- ➡ Although some guidelines suggest clinical surveillance instead of anticoagulation in patients with low-risk subsegmental pulmonary embolism, a recent prospective cohort study involving such patients who were treated without anticoagulation therapy showed a higher-than-expected incidence of recurrent venous thromboembolism during 90-day follow-up
- ➡ A randomized, placebo-controlled trial of clinical surveillance as compared with anticoagulation in this patient population is ongoing (ClinicalTrials.gov number, NCT04263038. opens in new tab).

Areas of Uncertainty

- Whether a particular direct oral anticoagulant is preferable for the treatment of pulmonary embolism is not known
- Ongoing randomized trials are assessing apixaban as compared with rivaroxaban for the initial treatment in patients with venous thromboembolism (NCT03266783. opens in new tab) and various doses of these drugs for extended treatment of such patients (NCT03285438. opens in new tab)

Areas of Uncertainty

- A multinational, randomized, controlled trial is under way to assess the efficacy and safety of a therapy involving a reduced dose of thrombolytic medication in patients with intermediate-risk acute pulmonary embolism (NCT04430569. opens in new tab)
- High-quality data are needed to inform the benefits and risks of intravascular thrombolysis and clot-retrieval approaches in the treatment of patients with pulmonary embolism.

Conclusions and Recommendations

- The patient with breathlessness described in the vignette was estimated to have greater than a 15% likelihood of pulmonary embolism
- In the context of the patient's low Wells score for pulmonary embolism, d-dimer testing was warranted to guide the need for imaging;
- CT is indicated, given the d-dimer level of more than 1000 ng per milliliter

Conclusions and Recommendations

- Under the presumption that the patient's CT scan confirms pulmonary embolism and shows normal right-ventricle dimensions, he would be classified as having low-risk pulmonary embolism, given his normal troponin level
- Treatment with a direct oral anticoagulant should be started promptly, and the patient should be given information about the pulmonary embolism diagnosis
- In the absence of contraindications to treatment on an outpatient basis (no Hestia criteria present), the patient can be discharged directly from the emergency department with prompt clinic follow-up

Conclusions and Recommendations

- We would recommend that he undergo cancer screening appropriate for his age and personal risk
- After the patient receives 3 to 6 months of therapy with a direct oral anticoagulant administered at a treatment-level dose, in the absence of an increased bleeding risk and considering his preferences, we would recommend switching to a low-dose direct oral anticoagulant on a long-term basis for secondary prevention.